

CQR | INTERNAL SOUNDERS & SPEAKERS



Aesthetically pleasing designs

CQR sounders are compatible with
all major alarm control panels

Choice of speaker, piezo
or horn types

www.cqr.co.uk



INNOVATIVE SOLUTIONS

CQR | INTERNAL SOUNDERS & SPEAKERS



CQR is one of the major manufacturers of security products in the UK, and as a leading supplier to the European security industry, has consistently been at the forefront of traditional and new product development since opening for business way back in the early eighties.

The CQR brand is recognised worldwide and has become synonymous with quality and reliability. CQR branded products are all designed with ease of installation and use in mind and meet many product standards worldwide, including also full compliance to ISO 9001:2000.

Now part of the OSL Group, CQR continues to bring new products to market, backed up by a sales and support service, we believe is second to none.

This Technical Data Sheet reflects our 'modern' approach to our industry and provides you with all the information you need on this section of our extensive range.

All CQR's Internal Speakers & Sounders are designed for Consistency, Quality and Reliability. Their proven track record over many years means they can be fitted as part of any installation with confidence, ensuring that top quality, reliable products are consistent throughout the system.

The useful 'at a glance' tables on the back of this leaflet gives you all the performance data you need to choose the right component for the job.

All of CQR Internal Speakers and Sounders are available from a wide range of specialist security Distributors who, together with our own technical back up, provide an excellent after-sales service as and when required.

However, should you require further information on any product in this leaflet, please give our Technical Support Team a call on +44(0)151 606 6311.



SOINT



A sleek white low profile louvre-free housing containing just a speaker (SOINT1), or a sounder SOINT2, that will blend discreetly into any surrounding setting.

OPTIONS:

SOINT 1/EC	16 OHM SPEAKER
SOINT 1/16/WH	16 OHM SPEAKER, TAMPERED
SOINT 1/8/WH	8 OHM SPEAKER, TAMPERED
SOINT 2/WH	ELECTRONICALLY DRIVEN SPEAKER WITH SELECTABLE SOUND OUTPUT AND LED INDICATION

SOINT2 HI-LO



The same low profile housing containing a multi tone sounder, with separate inputs for exit time and alarm sound.

OPTIONS:

SOINT 2/WH/HI-LO	110dB(A) 300mA, TAMPERED
------------------	--------------------------

SOMACH

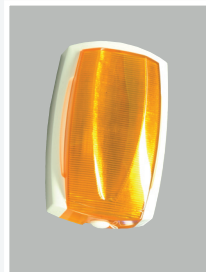


An attractive louvre-effect internal sounder whose two-piece housing clips together and is also available as either a speaker SOMACH1 or sounder SOMACH2.

OPTIONS:

SOMACH1/WH/16	16 OHM SPEAKER
SOMACH1/WH/16/T	16 OHM SPEAKER, TAMPERED
SOMACH 1/WH/8	8 OHM SPEAKER
SOMACH1/WH/8/T	8 OHM SPEAKER, TAMPERED
SOMACH2/WH	ELECTRONICALLY DRIVEN SPEAKER WITH HI-WARBLE 110dB(A) SOUND OUTPUT

INTRA



A fully functional sounder and strobe in miniature form which may be used internally and externally. It contains a 6V rechargeable battery and 20 minute cut-off timer.

AVAILABLE COLOURS:

LENS COLOURS:



CODE:

BCINTRA/W/COLOUR OF LENS

PIEZO SOUNDERS

A range of piezo electronic sounders which allow you to select the right unit according to size, sounder output and current drain requirements. The Omega includes a separate strobe input plus tamper.



SOSB1



SOSB2



SO401/WH



OMEGA

HORN SOUNDERS

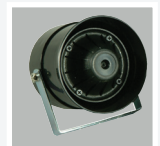
A range of horn sounders with different sound outputs and current consumption, suitable for use in internal and external applications



SO812



SO812/1C



SO6012

BUZZERS

A range of electro mechanical and piezo buzzers, miniature in size, suitable for numerous applications.



BZ35/LS



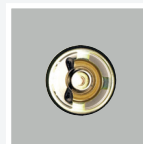
BZ27/LS



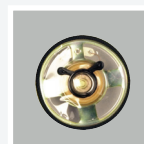
BZ722

SPEAKERS

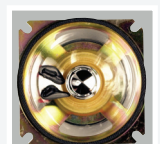
A range of mylar cone loudspeakers in three different diameter sizes for use in alarm and other applications.



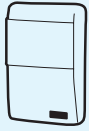
SO50M2



SO66M



SO85M



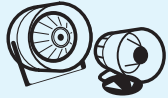
SOINT & SOINT2 HI-LO
W: 100mm H: 155mm D: 48mm



SOMACH
W: 100mm H: 160mm D: 70mm



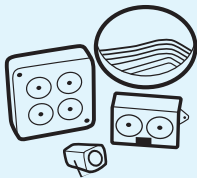
INTRA
W: 112mm H: 175mm D: 50mm



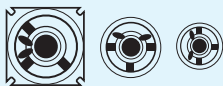
HORN SOUNDERS



BUZZERS



PIEZIO SOUNDERS



SPEAKERS



CQR Security
125 Pasture Road, Moreton, Wirral
United Kingdom, CH46 4TH
Tel: +44(0)151 606 1000
Fax: +44(0)151 606 1122
Email: info@cqr.co.uk
www.cqr.co.uk

A member of **OSU**
GROUP OF COMPANIES

INTERNAL SOUNDERS AT A GLANCE

	Soint EC	Soint1	Soint2	Soint Hi-Lo	Somach1	Somach 2	Intra
Sounder type	16 ohm speaker	8/16ohm speaker	16 ohm speaker	16 ohm speaker	8/16 ohm speaker	16 ohm speaker	Single piezo
Voltage	N/A	N/A	6 -15vdc	12 -15 vdc	N/A	6 -15 vdc	12 -15 vdc
Current	N/A	N/A	250mA	300mA - Hi 33 mA - Lo	N/A	240 mA	240 mA sounder 120 mA strobe
Sound output dB(A) at 1m	N/A	N/A	110	110 - Hi 90 - Lo	N/A	110	115
Frequency range	N/A	N/A	1.2 - 1.8 kHz	1.2 - 1.8 kHz	N/A	0.6 - 1.2 kHz	1.6 - 2.2 kHz
Timer	N/A	N/A	N/A	N/A	N/A	N/A	20min
Tamper protection	N/A	Wall/cover	Wall/cover	Wall/cover	Optional	Wall/cover	Wall/cover
Material	ABS	ABS	ABS	ABS	ABS	ABS	Polycarbonate
Visual indication	N/A	N/A	LED	LED	N/A	N/A	Strobe
SAB	N/A	N/A	N/A	N/A	N/A	N/A	Yes

HORN SOUNDERS AT A GLANCE

	SO6012	SO812	SO812/1C
Voltage	6 -15 vdc	6 -15 vdc	6 -15 vdc
Current	1.5A	300mA	650mA
Sound output dB(A) at 1m	130	118	122
Frequency range	1.7 - 2.4kHz	0.6 1.2kHz	0.8 -1.7kHz
Material	ABS	ABS	ABS
Weight	1100gm	432gm	440gm
Size mm	127 x 100 Horn Dia 115	83x 96 Horn Dia 83	83x 96 Horn Dia 83

BUZZERS AT A GLANCE

	BZ35/LS	BZ27/LS	BZ722
Voltage	3 -24 vdc	3 -24 vdc	9 -15 vdc
Current	15 mA	12mA	25mA
Sound output dB(A) at 1m	100	75	75
Frequency range	3.3kHz	2.6kHz	400Hz
Material	ABS	ABS	ABS
Size mm	26 x 39 Dia	14 x 32 Dia	23 x 17 x 27

SPEAKERS AT A GLANCE

	SO50M2	SO66M	SO85M
OHM	8	8	8/16
Max power (W)	2	3	12
Frequency range	3kHz	4.5kHz	5kHz
Material	Mylar	Mylar	Mylar
Size mm	50 Dia x 20	66 Dia x 20	87x87x35

PIEZIO SOUNDERS AT A GLANCE

	SOSB1	SOSB2	SO401	Omega
Voltage	6 -15 vdc	6 -15 vdc	6 -15 vdc	12 vdc
Sounder Current	85mA	190mA	160mA	120mA
Sound output dB(A) at 1m	109	111	109	110/95
Frequency range	1.7 - 2.4kHz	0.6 1.2kHz	2.3 - 2.8kHz	1.5 - 2.8 kHz
Strobe	N/A	N/A	N/A	Yes
Strobe Current	N/A	N/A	N/A	120mA
Material	ABS	ABS	ABS	Polystyrene
Size mm	115x55x33	106x106x34	60x45x40	133 Dia x 40

DATA SHEETS ALSO AVAILABLE:

- Cable & door loops
- Detection
- External sounders
- Emergency switches & accessories
- Freewave - wirefree system
- Hydrosure - fall detection for swimming pools & ponds



distributed by: